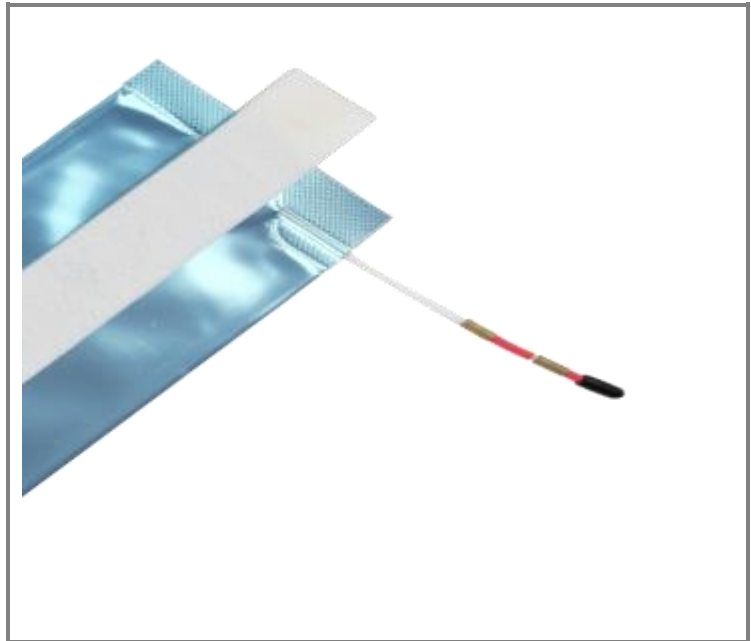


SSB2 Sealing Bag for telecommunication cables

The universal sealing system for cable ducts and cable distributors and service entries in the telecommunication sector.

For duct ID Ø 40 - 150 mm (1.6" up to 6").

2 times inflatable.



GENERAL INFORMATION

The Sealing Bag is a further development of the sealing cushion/valve, deployed very successfully since 2006 and characterised by easy installation and removal as well as reusability

All Wolf[®] sealing elements fulfil the requirements of many European telecommunications network operators, including T-Com TS 0307/96 (approval no. Wolf 2005-08-11 ADE 100 (valve), France Telecom RSD CSE C75-11H, British Telecom LN584 (02/2011). The leak rate (diffusion rate) of the Wolf[®] sealing elements is far lower than the T-Com requirement and the leak rates of competitor products.

Wolf[®] sealing elements provide the user with a durable, reliable seal up to 0.5 bar/ 5 m water column in a temperature range of -15°C to +30°C (+45°C for a short period of 4h).

PRODUCT DESCRIPTION

SEALING ELEMENT

SEALING ELEMENT (uncoated)

The sealing cushion is made of a five-layered aluminium laminate.

The high quality of both material and processing guarantees a very low diffusion/leak rate of ~ 0.73 mbarl / year and ensures a long service life.

THE FILLING UNIT:

The plastic filling tube is welded to the flat tubular cushion by means of a special heat-sealing process (patented).

The pressure filling is carried out via a filling adapter (Prod.-No. 19.5 SSB-A), which is attached to the filling tube before inflation. After inflation, the filling tube is pressure-sealed by means of a crimp sleeve and the original Wolf crimp tool (Prod.-No. 19.5 BC).

Sealing Bags can be reused once (i.e. is inflatable twice in total).

COATING MATERIAL

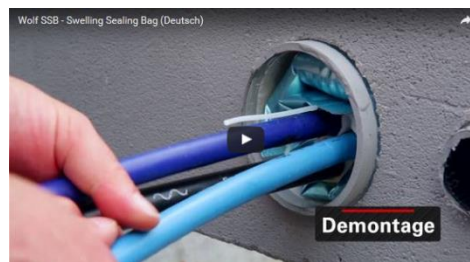
	Non-woven waterproofing sealing strip (type „Q..“)
Material sealing strip	Self-sealing needle punched non-woven polypropylen (PP) fleece impregnated with super absorbing and water swelling polymer. Geotextile robustness class GRK3 (dry)
Installation	Installation not possible in running or standing water! Swells immediately upon contact with water. For installation in running or standing water we recommend Art.-No. 19.3 ZKSB2
Removal	Simple. No adhesion.
Tightness	Directly on contact with water
Reusability	Reusable. Can be reinstalled as soon as the swelling material has completely dried out.

EASY TO INSTALL & REMOVE

Video

see
www.wolf-abdichttechnik.com

Installation



PRODUCT FEATURES -GENERAL INFORMATION-

Tight against gas diffusion, dust, water (5 m water column/ 0.5 bar (min)) and chemical mixtures
The high-quality, robust aluminium laminate

- adapts flexibly to the sealing area, independently of cable diameter and configuration or contamination by dirt
- ensures a long service life
- is resistant to chemical mixtures pH2 to pH12, fuels etc.

The PE inflation tube and crimp sleeve technology ...

- make inflation with compressed air simple (CO2-free!)
- allows flexible adaptation of the inflated cushion to fit the surrounding space and prevents buckling of cables and ducts or changes in technical transmission properties
- simple joint & crimp technology, ideal for on-site operation
- facilitates damage-free removal and re-installation

Only for types
L 40 up to L60

Automatic fill-stop device

Prod.-No. 33 DB VG8-M8 incl replacement seal.
Essential when inflating types 40 to 60.

Multi-configurations
(> 1 cable)

A gap sealing is required!

Wolf® cable separator or Wolf® sealing strip.

Only type
ZK

Recommendation:

**Prod.-No. 40.1 Lubricant Polywater or
Prod.-No. 40.2 spray bottle** (for your own mixture
of dish washing soap-water)

reduces the coefficient of friction during installation

Inflation adapter

Prod.-No. 19.5 SSB-A Inflation adapter for connecting
the inflation tube on the Sealing Bag and the torque
plug nipple of the compressor tube. 2 parts, including
Prod.-No. 19.5 SSB-SA and white end-cap.

Single-die
crimp tool

Prod.-No. 19.5 BC crimp tool

Single-die crimp tool 5 mm with automatic locking.
For pressing the crimp sleeve. Service life warranty
only when using original Wolf® tool.

Inflation

Battery-operated compressor

Prod.-No. 33 BDC-S

(Battery-operated compressor, air chuck adapter,
pressure hose 3 m). The pressure can also
be filled with commercially available compressors,
which meet the following requirements:

- filling capacity \leq 20 liters / min
- automatic pressure shut-off or pressure
gauge 0-4 bar
- Accuracy of filling pressure display in
the area 0.5 - 3.5 bar (\pm 0.1 bar) at 20°C.



DELIVERY PROGRAM

Abdichtbereich Rohr-Belegung			Duct sealing range occupancy			Beschichtung sealing tape Quellvlies "QV"-Band non-woven swelling sealing strip
Rohr-ID	Ø		Duct			
[mm]	Max [mm]	Ø minimal [mm]	ID [inch]	Ø max [inch]	Ø minimal [inch]	Art. Nr. Part No. 19.1 VE/PU 50 Stk/ items flach ausgelegt, laid out flat 19.1 VE/PU 100 Stk/ items flach ausgelegt, laid out flat
45	32	0	1.8	1.26	0	19.1 SSB2 L 45/
50	33	0	2	1.3	0	19.1 SSB2 L 50/
60	42	0	2.4	1.7	0	19.1 SSB2 L 60/
80	45	0	3	1.8	0	19.1 SSB2 L 80/
90	55	0	3.5	2.2	0	19.1 SSB2 L 90/
105	70	0	4	2.8	0	19.1 SSB2 L 100/
115	80	0	4.5	3.2	0	19.1 SSB2 L 115/
125	85	20	5	3.4	0.79	19.1 SSB2 L 125/
150	105	42	6	4.1	1.66	19.1 SSB2 L 150/

VE Verpackungseinheit
PU packaging unit

Installation instructions	MA 05 1.1	Safety instructions
	MA 05 2.1	Cable-/duct-sealing range and filling pressure for
	MA 05 3.1	Installation accessories / cable sealing
	MA 05 5.4	Short instructions for installing the sealing element (valve)

CONTACT

WOIF[®] GmbH  ++49 (0) 711 87 39 41 | service@wolf-systems.com | www.wolf-systems.com

All information, pictures and graphic representations correspond to our current state of information and are correct to the best of our knowledge and belief. However, they cannot be considered as a binding warranty of the properties described. Such a warranty applies only to our product standards. The user must judge for himself on his own responsibility whether the product described is suitable for his intended application. Our liability for this product is based exclusively on our general terms and conditions of business. We reserve the right to alter our specifications without prior notice. We reserve the right to alter our specifications without prior notice. We also reserve the right to make, without prior notice to the buyer, such changes to materials or processes as do not affect compliance with the specifications.